



STUDIO, 1, 2 BED &  
SERVICED APARTMENTS  
**COMMERCIAL OUTLETS**

Upto **8%**  
**Guaranteed  
Rental Income**

EXCLUSIVELY MARKETED BY  
**ESTATE X.COM**



# Urban Heights

---

Urban Heights have four incredible residential floors, each offering an array of studio, 1-bedroom, and 2-bedroom apartments. Our architects and interior designers have painstakingly crafted each unit to perfection. Revel in the comforts of a well-appointed kitchen, a cozy lounge, and a pristine bathroom. What's more, our flexible payment plans make it effortlessly accessible for discerning buyers like you.

# Commercial Excellence

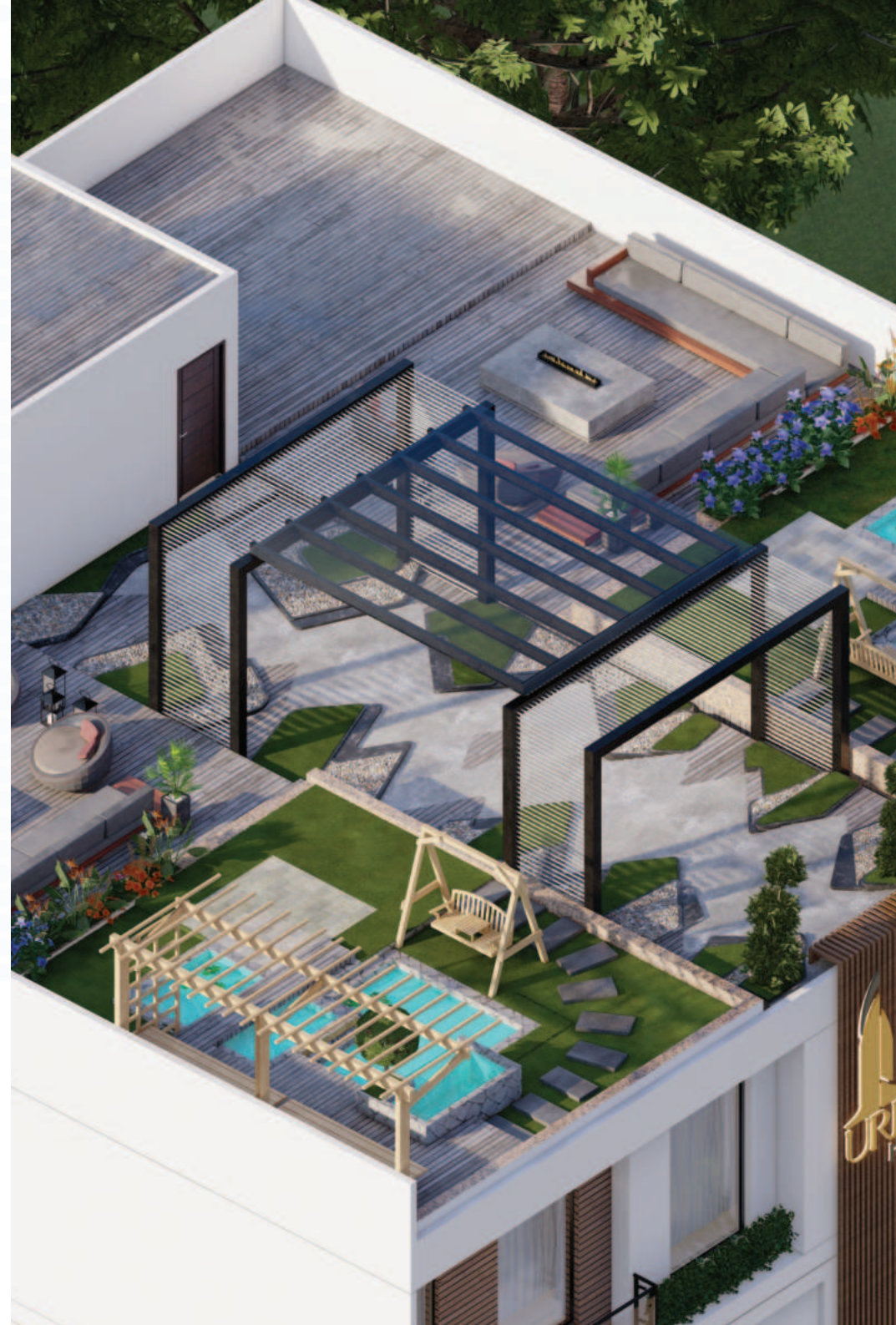
---

The lower ground and ground floors of Urban Heights beckon commercial enthusiasts with state-of-the-art opportunities. Seamlessly blend business and convenience in this thriving hub of Bahria Town Lahore. Every commercial necessity is at your fingertips, ensuring success for your ventures. EstateX welcomes you to explore the construction site firsthand, reassuring your confidence in this remarkable endeavor.

# Prime Residence

---

Experience luxury living at Urban Heights with studio, 1-bedroom, and 2-bedroom apartments. Enjoy modern kitchens, inviting lounges, sleek bathrooms, and flexible payment plans. Located in Lahore's prime area, it's your chance to own a dream home. Act now!





# LOCATION

Urban Heights is one of the most in-demand projects currently under construction in Bahria Town, Lahore, situated between the main gate and Safari Villas. Its direct access to Raiwind Road, Defence Road, and Lahore Ring Road makes its location highly appealing.



**1** Min Drive From  
**Bahria Hospital**

**1** Min Drive From  
**Safari Villas**

**2** Min Drive From  
**Jamia Mosque**

**2** Min Drive From  
**Ring Road**

**3** Min Drive From  
**Eiffel Tower**

## PRESENTED BY

# APEX GROUP

---

Being an advocate of transforming real estate into the most professional and credible business in Pakistan, Apex Group leaves no stone unturned to turn its vision into a beautiful reality. Having spent 19 years in the real estate sector, Apex Group successfully developed, marketed & delivered multiple projects in mega cities of Pakistan.

Apex Group always focused on a benchmark that real estate projects should be endowed with the idea of well-planned community-building rather than simply constructing the infrastructure and letting people live in it. The result of its commitment to vision is, Apex Group finds its name today among the top real estate developers in the country.

## WHY INVEST IN

# URBAN HEIGHTS?

---

- Prime Location - Near Safari Villas, Bahria Town, Lahore.
- High Investment Yield up to 8%.
- Ready for Possession Apartments & Commercial Spaces.
- Developed by one of the trusted real estate developers, Apex Group.
- Roof Top BBQ Area available for BBQ Parties.
- Safe & Secure Investment Option in Flexible Payment Plan.
- Commercial and Co-working Spaces on the Ground Floor & Basement.
- High-Speed Elevators Installed for members and their families.
- A Gated Community with 24/7 Surveillance by CCTV & Security Staff.
- Monthly Income on Full Payment.



# FACILITIES & AMENITIES



Mosque



Roof Top  
Garden



Dedicated  
Parking



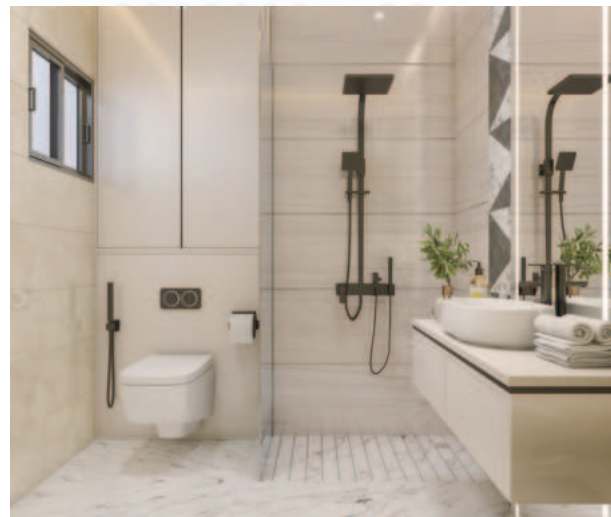
Gym



Bahria International  
Hospital



24/7 CCTV

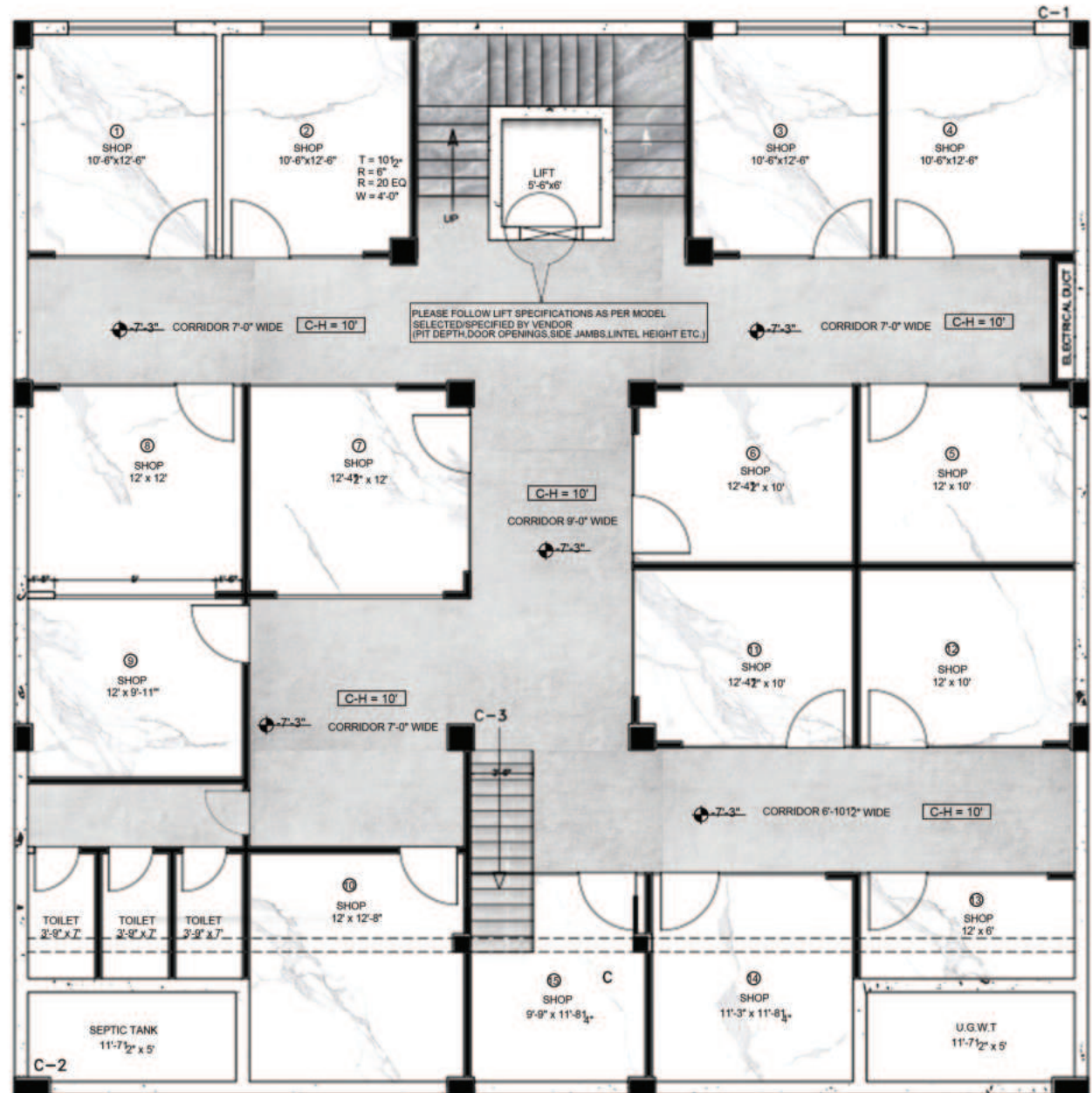


# FLOOR PLANS

## COMMERCIAL

### LOWER GROUND FLOOR

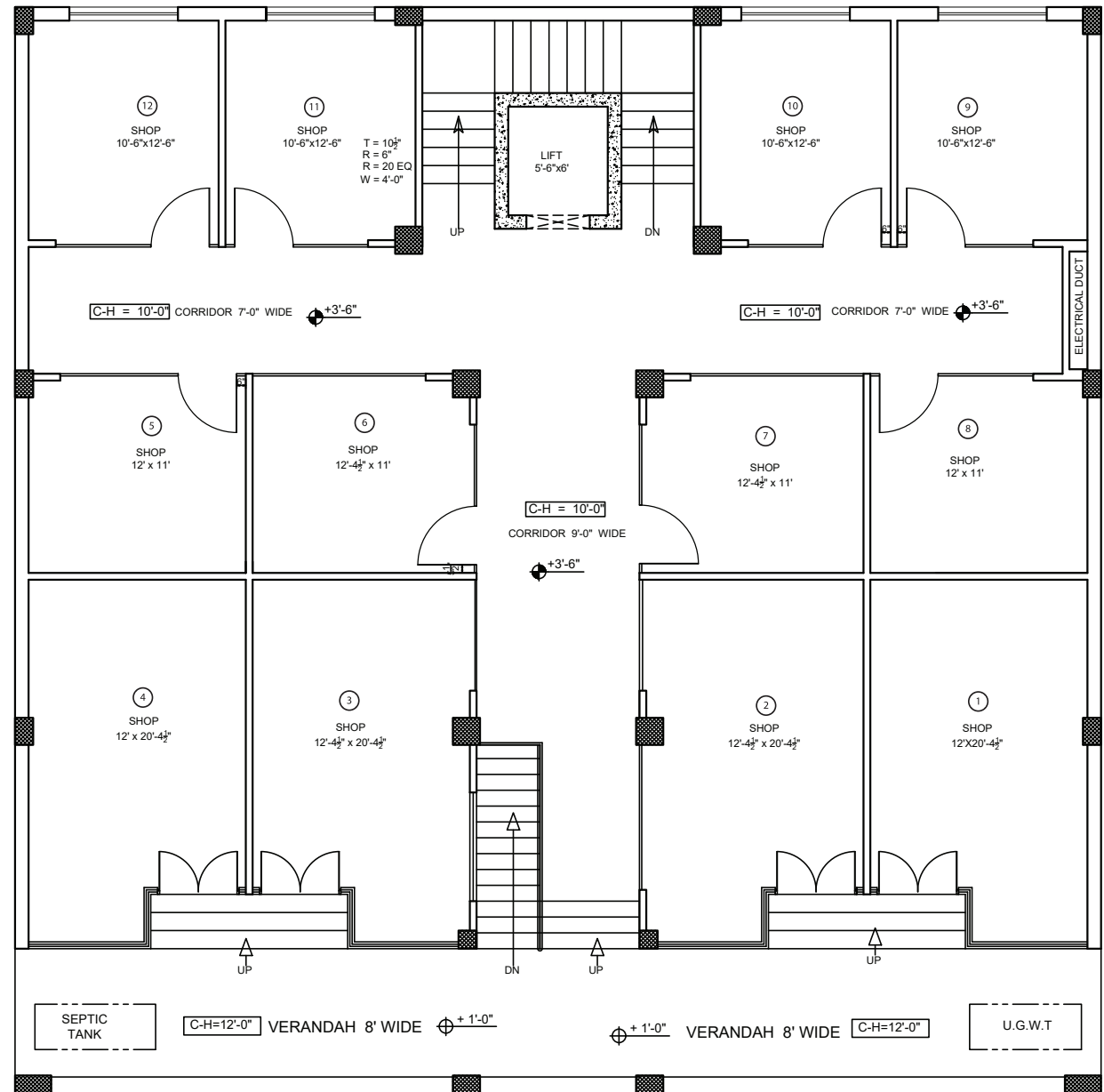
TYPE	SHOP #	SIZE
Shop	BF-1	210
Shop	BF-2	210
Shop	BF-3	210
Shop	BF-4	210
Shop	BF-5	193
Shop	BF-6	193
Shop	BF-7	193
Shop	BF-8	193
Shop	BF-9	193
Shop	BF-10	193
Shop	BF-11	193
Shop	BF-12	193
Shop	BF-13	205
Shop	BF-14	205
Shop	BF-15	205



# COMMERCIAL

## GROUND FLOOR

TYPE	SHOP#	SIZE
Shop	GF-1	360
Shop	GF-2	360
Shop	GF-3	360
Shop	GF-4	360
Shop	GF-5	190
Shop	GF-6	190
Shop	GF-7	190
Shop	GF-8	190
Shop	GF-9	200
Shop	GF-10	200
Shop	GF-11	200
Shop	GF-12	200



# APARTMENTS

## FIRST FLOOR

TYPE	APARTMENT #	SIZE
1 BED	FF-1	513
1 BED	FF-2	728
1 BED	FF-3	568
1 BED	FF-4	568
1 BED	FF-5	725
1 BED	FF-6	500

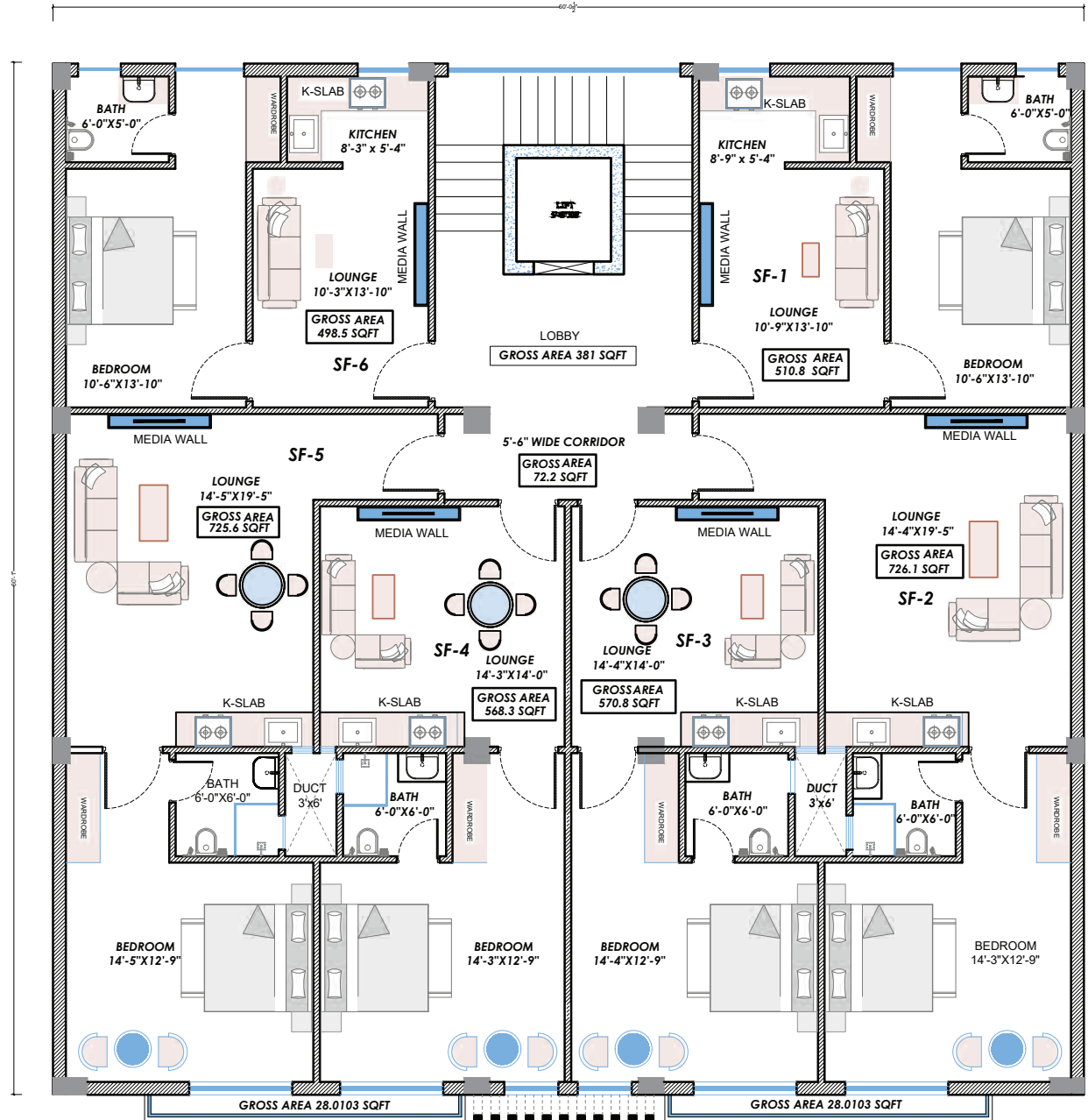




# APARTMENTS

## SECOND FLOOR

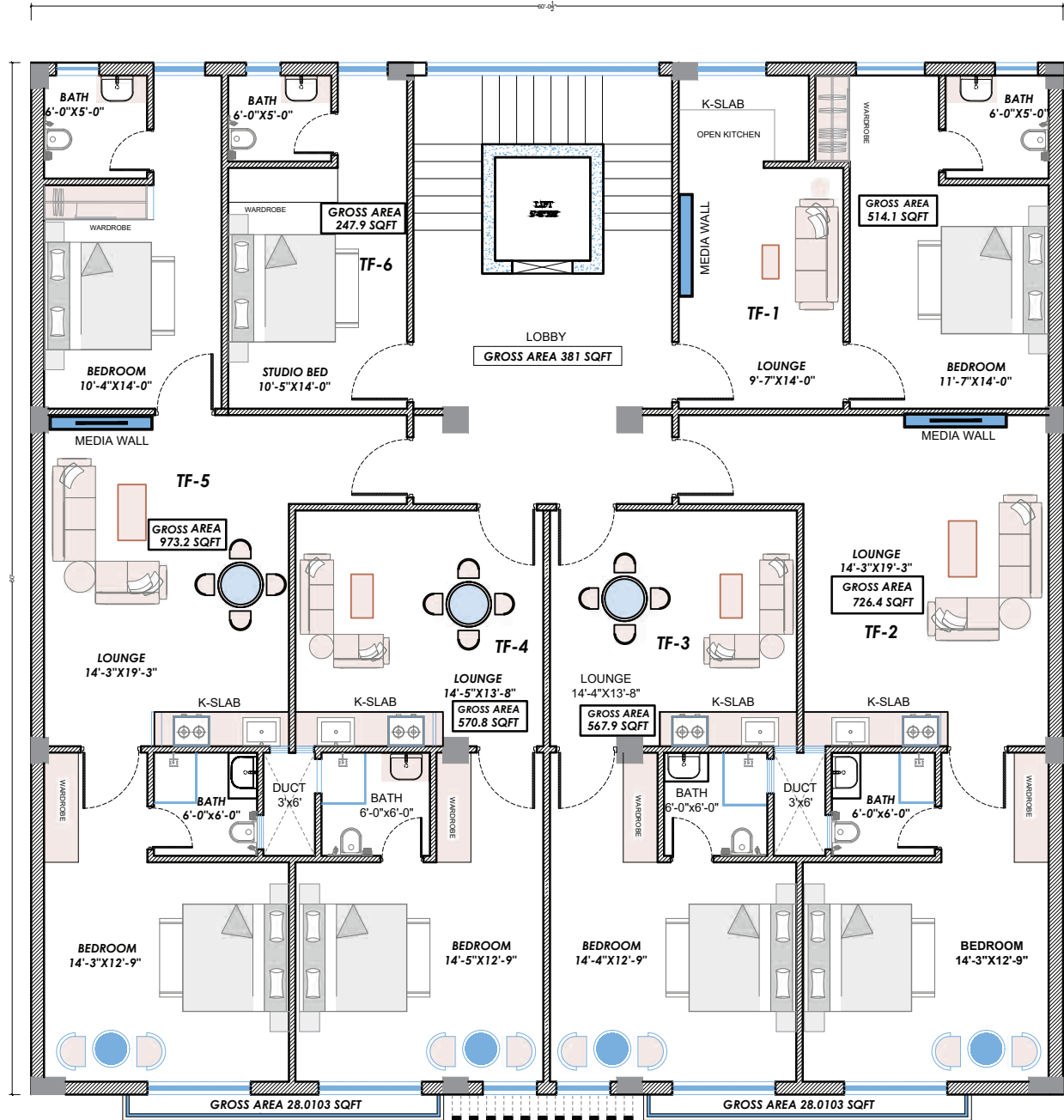
TYPE	APARTMENT #	SIZE
1 BED	SF-1	511
1 BED	SF-2	726
1 BED	SF-3	571
1 BED	SF-4	568
1 BED	SF-5	726
1 BED	SF-6	499



# APARTMENTS

## THIRD FLOOR

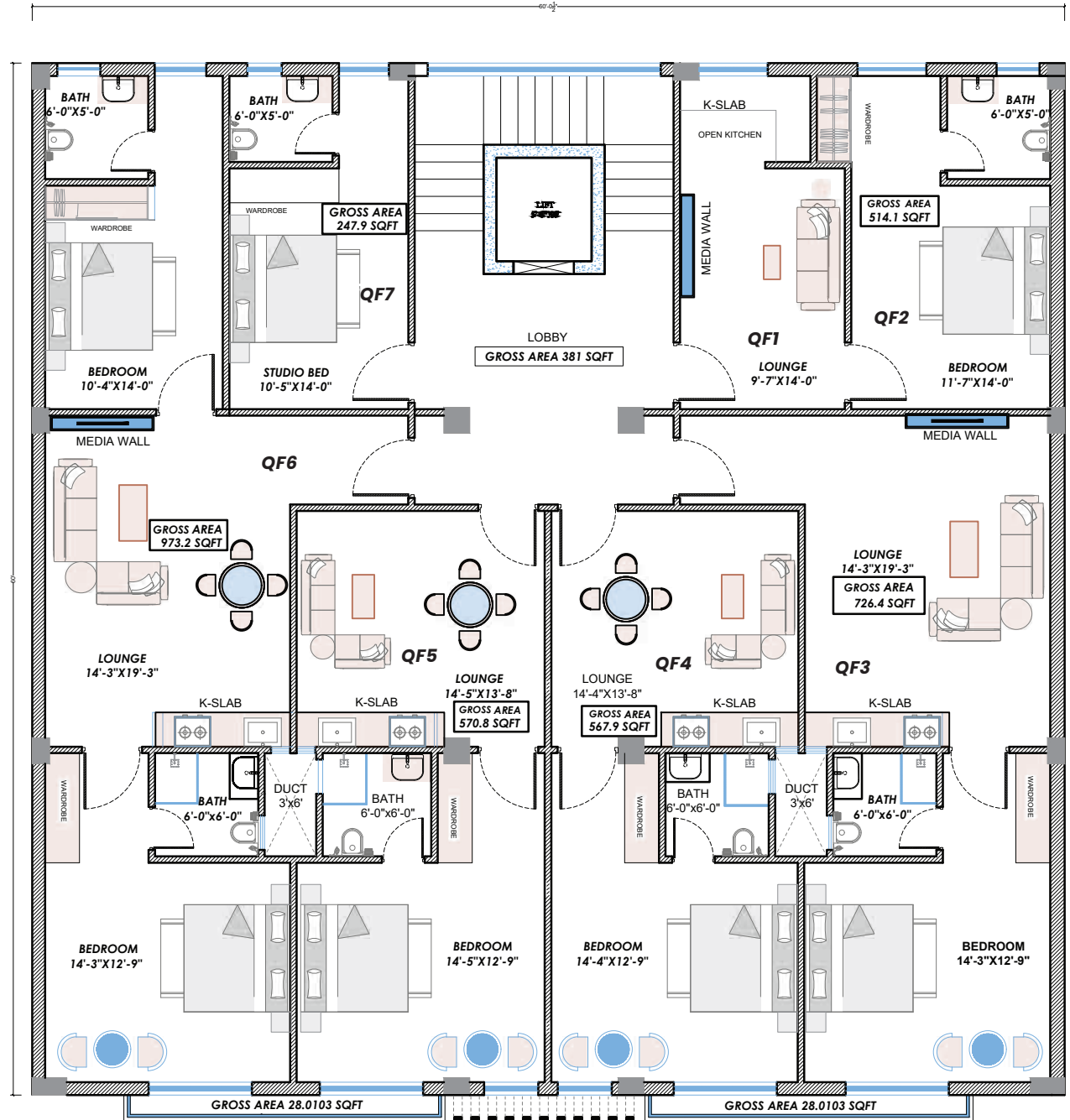
TYPE	APARTMENT #	SIZE
1 BED	TF-1	514
1 BED	TF-2	727
1 BED	TF-3	568
1 BED	TF-4	571
2 BED	TF-5	973
STUDIO	TF-6	248



# APARTMENTS

## FOURTH FLOOR

TYPE	APARTMENT #	SIZE
STUDIO	QF-1	262
STUDIO	QF-2	315
1 BED	QF-3	601
1 BED	QF-4	581
1 BED	QF-5	583
2 BED	QF-6	1,020
STUDIO	QF-7	239



EXCLUSIVELY MARKETED BY  
**ESTATEX.COM**



BROUGHT  
TO YOU BY



**FOR MORE INFORMATION & BOOKING**  
CALL OR VISIT US TODAY

 **1st Floor, IEP Building,  
Liberty Chowk Gulberg 3 Lahore.**

 **+92 304 111 739**

[www.estatex.com](http://www.estatex.com)